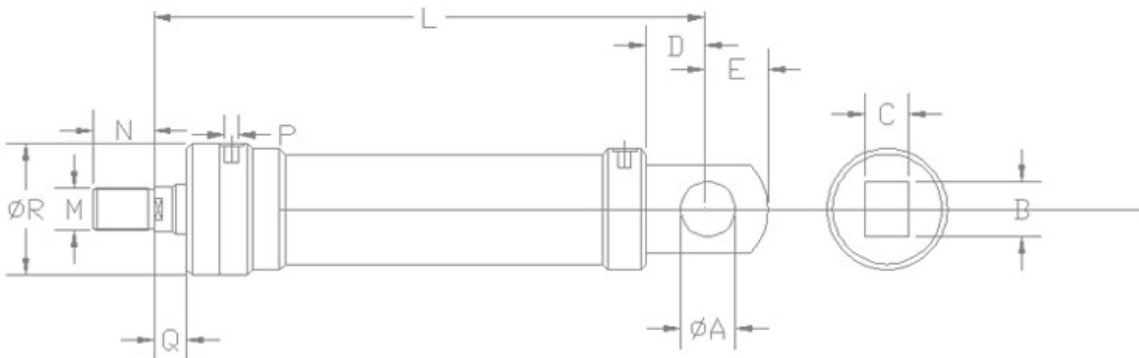


HYDRAULIC CYLINDER

Cylinder up to 1000mm diameter and stroke of 3000mm

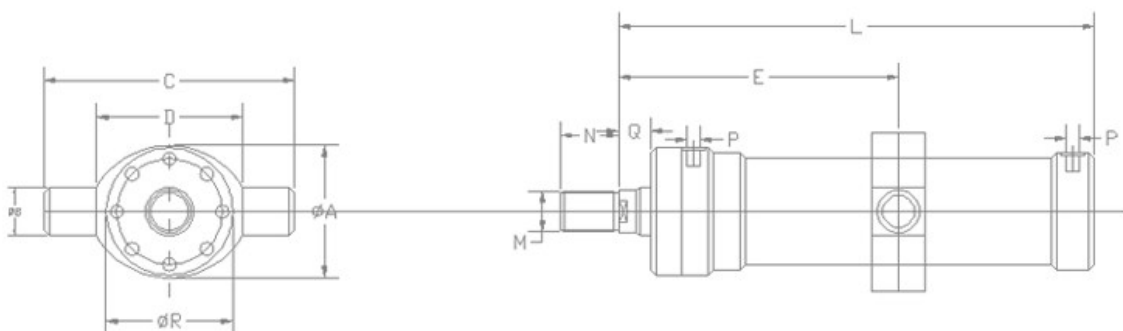


DOUBLE ACTING CYLINDER (REAR CLEVIS MOUNTING)



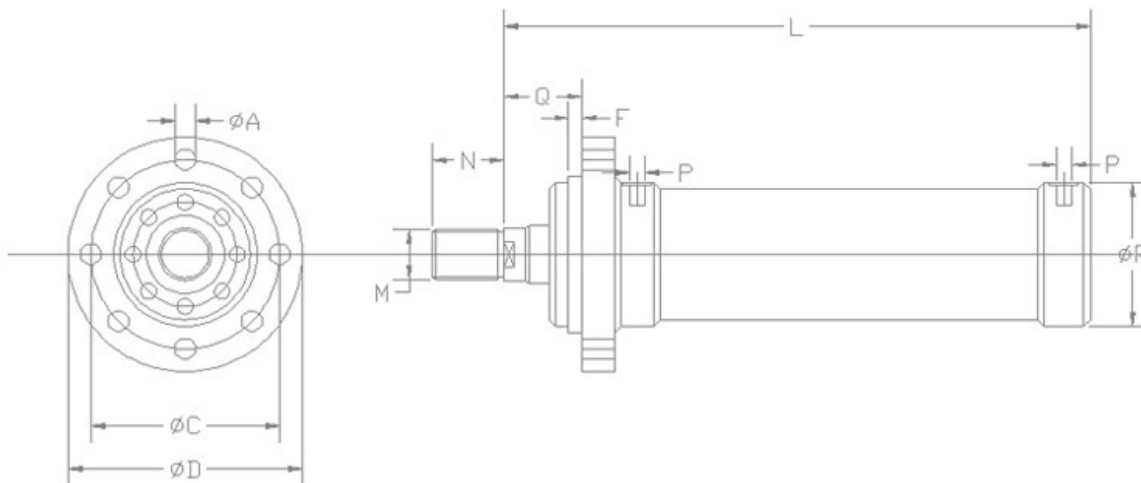
Bore Dia	A	B	C	D	E	J	K
63	35	60	40	50	35	240	-
80	40	70	50	60	40	290	-
100	50	90	60	70	45	320	360
125	60	100	70	90	60	370	420
160	70	140	90	120	80	440	520
200	90	160	120	140	115	510	600
250	120	200	140	170	130	580	680
320	140	230	160	190	140	700	830

DOUBLE ACTING CYLINDER (CENTRE TRUNNION MOUNTING)



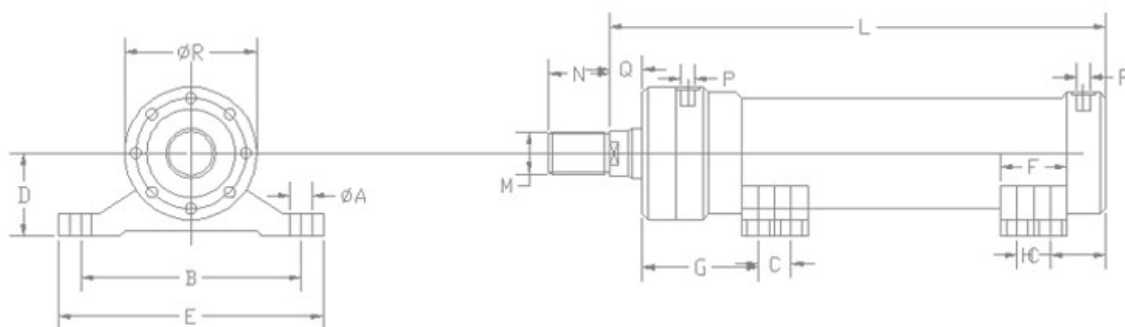
Bore Dia	A	B	C	D	E(max)	J	K
63	95	35	150	100	190	220	-
80	120	40	190	130	215	250	-
100	140	50	230	170	250	290	340
125	180	60	280	190	265	320	370
160	220	90	360	230	300	360	430
200	300	110	440	300	325	410	490
250	360	130	550	360	360	450	550
320	430	160	680	450	430	560	680

DOUBLE ACTING CYLINDER (FRONT FLANGE MOUNTING)



Bore Dia	A	B	C	D	E(max)	F	J	K
63	12	6	130	165	100	5	220	-
80	12	6	160	200	120	5	250	-
100	14	6	170	210	136	5	300	350
125	18	8	200	250	166	5	350	400
160	20	8	260	320	206	5	420	470
200	22	12	320	380	260	5	550	600
250	22	16	390	460	310	8	570	630
320	22	20	460	540	390	8	700	780

DOUBLE ACTING CYLINDER (FOOT MOUNTING)

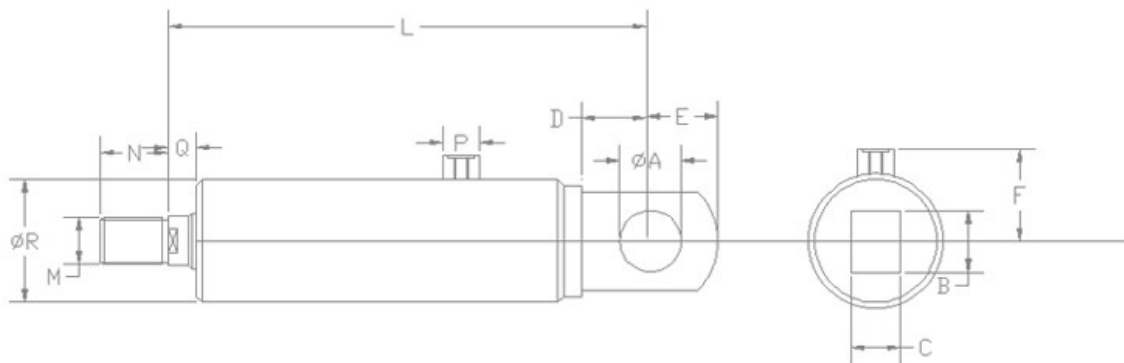


Bore Dia	A	B	C	D	E	F	G	H	J	K
63	12	120	25	50	150	50	170	120	185	-
80	12	140	25	60	170	50	180	120	215	-
100	14	160	30	75	200	60	190	140	250	290
125	18	200	40	90	250	80	200	150	280	330
160	22	250	50	120	300	100	210	160	320	400
200	26	320	60	150	380	120	220	170	370	450
250	33	390	70	180	470	140	230	180	400	510
320	40	450	80	225	550	240	240	190	520	640

DOUBLE ACTING CYLINDER (Basic Dimensions)

Bore Dia	Rod Dia	P	M	N	Q	R	Optional CUSHION LENGTH	
							Piston	Rod
63	36/45	1 1/2"	M30x2	45	50	120	25	25
80	45/56	1/2"	M39x3	55	50	140	30	30
100	56/70	3/4"	M50x3	75	60	170	35	35
125	70/90	3/4"	M64x3	95	65	200	50	50
160	100/110	1"	M90x3	120	70	270	55	55
200	125/140	1 1/4"	M110x4	150	75	320	70	70
250	160/180	1 1/4"	M120x4	160	80	400	90	90
320	200/220	1 1/2"	M160x4	200	85	500	100	100

SINGLE ACTING CYLINDER (REAR CLEVIS MOUNTING)



Bore Dia	A	B	C	D	E	F	M	N	P	Q	Dia-R
36	16	40	16	20	16	40	M27x2	35	3/8"	15	60
45	20	50	20	30	20	50	M33x2	40	3/8"	15	73
56	25	70	25	35	25	55	M42x2	50	1/2"	20	89
70	35	80	35	45	35	65	M52x2	60	1/2"	25	102
90	40	90	40	50	40	70	M68x3	80	1/2"	30	114
110	50	120	50	60	50	90	M68x3	80	3/4"	30	141
125	60	130	60	70	60	105	M90x3	110	3/4"	40	168
160	70	190	80	80	70	130	M110x3	125	1"	60	219

SECTION CODE

Construction	Piston Dia	Piston Rod	Stroke Length	Part	Hydraulic Medium	Cushioning	Max-working Pressure
TR - TIE ROD W - WELDED S - SCREWED	50 63 80 100 125 160 200	28/36 38/45 45/56 56/70 70/90 100/110 125/140	Specify	01 - BSP 02 - Metric ISO 03 - SAE FLANGE O - Any other	A - Mineral Oil B - Phosphate Ester C - Any other type	W - Without Cushioning K - Cushioning at Blind end G - Cushioning at Gland end B - Cushioning at Both end	L 0-7Mpa (0-70Bar) M 0-25Mpa (0-250Bar) H 0-35Mpa (0-350Bar) VH More than 35Mpa (350Bar)
↓	↓	↓	↓	↓	↓	↓	↓
W	100	70	500	01	A	W	M